

HATIM Concrete Industries Ltd.

Corporate Office:
BTI Astoria (5th Floor), House-31, road-20,
Block-J, Baridhara R/A, Dhaka-1212

Chattogram Office:
TSN Complex (1st Floor), 89/90
Agrabad C/A, Chattogram, Bangladesh

Factory:
Boralu Paragaon, Rupgnj, Narayanganj
Contact: +88 0126-742028, +88 01709-258787
E-mail: hatim.concrete@gmail.com, web: www.hatimconcretebd.com

© LineWork Production. +8801819281434, linework10@gmail.com



concrete indu



- Latest Technology
- BUET Tested
- Automatic Machine
- Quality Ensure
- Environment Friendly
- Cost Effective

HATIM Concrete Industries Ltd.
BTI Astoria (5th Floor), House-31, Road-20, Block-J, Baridhara R/A, Dhaka-1212



According to the Bangladesh Brick Manufacturing Owners Association, Around 7,000 soil burning brick kilns produce around 25 billion bricks every year, consuming over 1.27 billion cubic feet of topsoil. For a country like Bangladesh, whose economy depends heavily on agriculture, this is very bad. Every time topsoil is extracted from a certain piece often. It goes barren for at least three years, which means nothing can be grown there during that period. As a result we are experiencing various environmental damage.

Now-a-days Eco-friendly bricks in the form of concrete blocks are gaining popularity in Bangladesh as means to mitigate the environment damage caused by conventional brick manufacturing. House Building Research Institute (HBRI), a component of the Ministry of Housing and Public Works has been working for over 40 years to develop a substitute for conventional bricks in the construction industry. Subsequently we are providing eco friendly Construction Materials which is economical & eco-friendly Construction Materials. Eco-friendly methodology reduced the energy consumption by minimizing energy inputs for some of the factors like heating, cooling & light. Our Construction Materials not only help to create better outdoor environment but also helps to build a healthier & safe indoor environment. We are dedicated and develop environment friendly, cost effective & energy efficient materials for next generation buildings.

Started on 2019 and duly Registered with the Joint Stock Company of Bangladesh. Hatim Concrete Industries Ltd. (HCIL) is a Manufacturer of Environment Friendly Various kind of Pre-Cast Concrete Products with proper maintain. We believe Standards for our valuable Customers. We have latest technologies and continuing its improvement policy. We have concern about our product quality and service to maintain International standard to our success and our professionalism.

MISSION

Our mission is to develop environment friendly, cost effective & energy efficient products for coming generation and grab a reputed position in this sector.



SLOGAN/VALUE PROPOSITION

Hatim Concrete Industries Ltd. - "A safe hand you can trust in infrastructure sector".



VISSION

Our focus presently is to make high class, good quality blocks, solid bricks, kerb-stone, drain curve, erosion control blocks, parking tiles etc. of various sizes as well as cater of custom-size at HATIM Concrete Industries Ltd. we are constantly researching the different needs and requirements of the construction and real estate sector of Bangladesh. In due time, we will be expanding our resources to introduce more products as well as to start exporting building products.

Our present focus is on improvising and promotion of concrete products through the whole country and becoming the largest Concrete products provider of Banglaesh.



ETHOS & VALUES

We believe in environment friendly solution of infrastructure and doing business in a way that is mutually beneficial for society and ourselves. Our unique characteristics is to provide not only building products but also create a healthy and safe indoor and outdoor amenities.



LIST OF HATIM PRODUCTS

Kerb Stone	
Product Name	Size
1. Kerb Stone (K1)	(550x380x150/120/65)mm
2. Kerb Stone (K2)	(570x300x300/150/100)mm
3. Kerb Stone (K6)	(500x400x120/65)mm
4. Kerb Stone (K3)	(600x300x100/60)mm
5. Kerb Stone (K4)	(600x200x100)mm
6. Kerb Stone (K7)	(500x350x100)mm
7. Saucer Block	(500x375x120/80)mm
8. Saucer Drain	(400x300x150)mm
9. K4 Plunk	(600x200x60)mm

Uni Pavers	
Product Name	Size
1. Uni-Paver	(222x110x100)mm
2. Uni-Paver	(222x110x80)mm
3. Uni-Paver	(222x110x60)mm

Rectangular Pavers	
Product Name	Size
1. Rectangular Paver	(200x100x100)mm
2. Rectangular Paver	(200x100x80)mm
3. Rectangular Paver	(200x100x60)mm

Hollow Block	
Product Name	Size
1. Hollow Block (Wall)	(390x190x100)mm
2. Hollow Block (Wall)	(390x190x140)mm
3. Hollow Block (Wall)	(390x190x190)mm

Solid Block	
Product Name	Size
1. Solid Brick	(240x110x70)mm

River Block	
Product Name	Size
1. River Block	(400x400x200)mm

Paving Block	
Product Name	Size
1. Erosion Control Block	(444x315x100)mm (444x315x80)mm
2. Soft Paving Block	(150x150x100)mm

* Size / Design can be modified as per customer requirement.



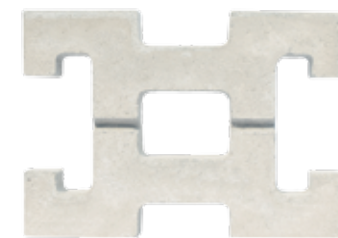
Hollow Block



Uni Paver (Colour)



Uni Paver



Erosion Control Block

Comparison between Concrete product with Clay brick.

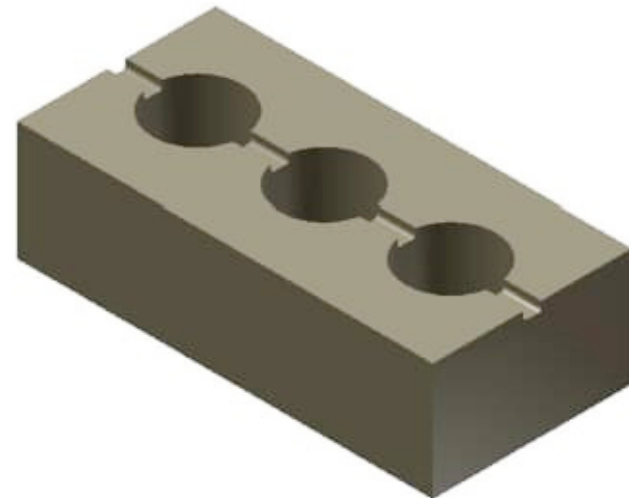
- 1 Hollow or Solid block have no need plaster. In the other hand traditional brick wall plaster require , so cost saving 15.25%
- 2 Weight saving to traditional brick.
 - (a) 90 mm thick hollow block wall weight save 47% then traditional clay brick wall.
 - (b) 100 mm thick hollow block wall weight save 43 % then traditional clay brick wall.
 - (c) 100 mm thick solid block wall weight save 25.5% then traditional clay brick wall.

Concrete Product is more batter then traditional product.

- (a) High strength
- (b) Long life
- (c) Reasonable prices
- (d) Easier setting and low maintenance cost.
- (e) Environmental friendly

Scope of work of Concrete Product :

- (a) Kerb stone : Footpath, Median of road, island and river protection, office yard, garden, resort etc.
- (b) both hollow and solid block using in the house, resort, garden , boundary wall, office etc.



Solid Block

CONCRETE HOLLOW WALL BLOCK



Load Bearing Block

Load bearing blocks are specially developed to construct tall buildings without column-beam frames. With the use of reinforced steel and grout, standard concrete masonry units can form a structure that can withstand some of the mightiest forces in the world. This type of construction can be survived from earthquakes, these types of Technology are using in California, New Zealand and Japan.

Partition Block

For external and internal walling in framed buildings, partition blocks are used instead of clay-burnt bricks to reduce the total weight of building. Consequently, the size of columns and beams are reduced with substantial reduction in foundation.

Special advantages

- No efflorescence
- Water absorption is much less than clay bricks (absorption is about 16%-20%)
- Fire resistant, provides Thermal & Sound insulation
- More ductile, thus perform better during earthquakes
- Requires much less mortar for laying and plastering



Hollow Block

UNI-PAVERS

Concrete Uni and Rectangular Pavers are high strength solid block and produced by high pressure and vibration. It is very popular in the urban area of developed countries for its high strength, artistic design and easy installation. It has wide using field in both government and private sector of our country. Usually Uni- paving blocks are used in Port container yard, Industrial yard, Drive way, Parking lot, Court yard, Grade road, internal Industrial road, Foot path and many other areas. Now various depth and color of Concrete Uni-paving blocks are available in our ready stock. You may design with the deferent colorful pavers as your desire.

Sound features of Concrete Uni-Paving Block:

Mode of natural sand, pea gravel, Portland cement by pneumatic controlled machine.

Reduce construction time.

Salinity free and fire resistance.

Curing is not required after installation.

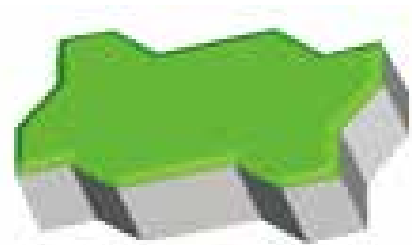
C.C, R.C.C, Mortar are not required below the pavers.

Only thin course of sand is required under the pavers.

The blocks are handy size so placement is very easy.

Environment friendly, pollution & contamination free products.

Repairing work of pavement is easy as the paver is replaceable.



Uni-Pavers

RECTANGULAR PAVERS



Rectangular Pavers

QUALITY KERB-STONE

We offer Quality KERB-Stones used for pleasing to the eye the manifestation of the area beside road, edges of footpaths, pavements, platforms, retaining edges and garden periphery. We manufacture these quality KERB-Stone using supreme quality raw material concrete and sophisticated methodologies. These are highly in style among our clients for stunning looks, fashionable designs and fabulous patterns. These products can be availed from us at affordable price.



Kerb Stone (K1)



Kerb Stone (K3)



Kerb Stone (K4)



Kerb Stone (K6)

1. KERB STONE (K1)

- High strength
- Long life
- Reasonable prices
- Easy to instal
- Easier maintenance

Applications:

- Roadways, Median, Embankment Protection, Industries



Size: (550 x 380 x150/120) mm

2. KERB STONE (K2)

- High strength
- Long life
- Reasonable prices
- Easy to instal
- Easier maintenance

Applications:

- Roadways, Median, Embankment Protection, Industries



Size: (570 x 300 x 300/150/100) mm

3. KERB STONE (K6)

- High strength
- Long life
- Reasonable prices
- Easy to instal
- Easier maintenance

Applications:

- Roadways, Median, Embankment Protection, Industries



Size: 500mm x 400mm x 120/65mm

4. KERB STONE (K3)

- High strength
- Long life
- Reasonable prices
- Easy to instal
- Easier maintenance

Applications:

- Roadways, Median,
- Embankment Protection, Industries



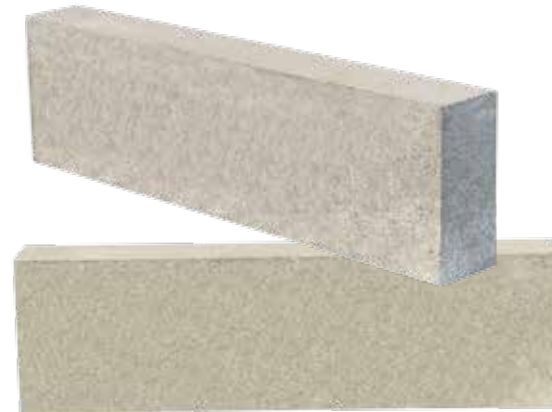
Size: 600mm x 300mm x 100/60mm

5. KERB STONE (K4)

- High strength
- Long life
- Reasonable prices
- Easy to instal
- Easier maintenance

Applications:

- Roadways, Median,
- Embankment Protection, Industries



Size: (600 x 200 x 100) mm

6. SAUCER BLOCK

- Provide integral draining system high strength
- Long life reasonable price

Applications:

- Smooth surface draining system
- Faster installation



Size: 500mm x375mm x 120/80mm

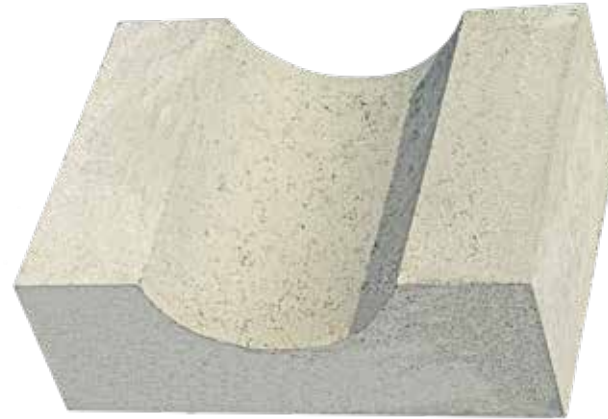
7. SAUCER DRAIN



- Provide integral draining system high strength
- Long life reasonable price

Applications:

- Smooth surface draining system
- Faster installation

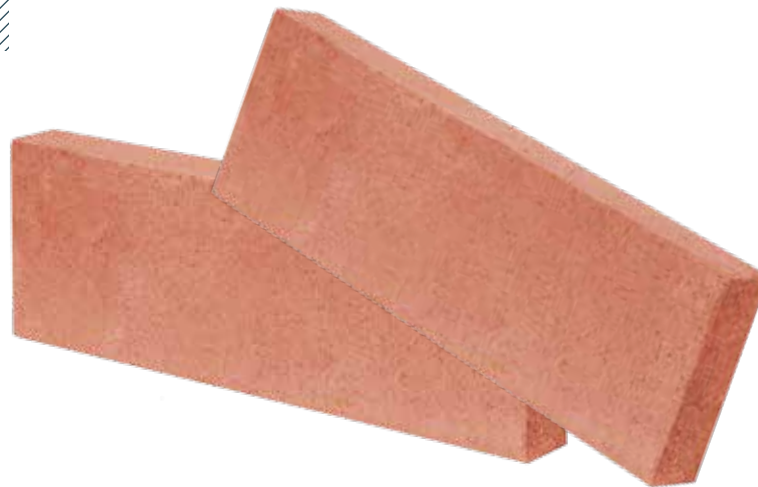


Size: 300mm x400mm x 150mm

8. K4 PLUNK



- High strength long life
- Reasonable prices



Size: (600 x 200 x 60) mm

9. UNI-PAVER (GRAY & COLOR)

Concrete paving blocks are widely used as ideal materials for Parking Lots, Footpaths, Walkways, Driveways, Bus Bays/Terminals, Taxiways, Container Yards, Industrial Yards and many more all over the world.

- High strength
- Long Life
- Reasonable prices

Applications:

- Pavement, Stack yard etc
- Industrial floor
- Size: (222 x 110 x 60) mm
- (222 x 110 x 80) mm
- (222 x 110 x 100) mm



10. RECTANGULAR PAVER

- Container yard system high strength/extra heavy duty
- Long life
- Reasonable prices
- Maintenance is easy due to quick & easy (individual) replacement

Applications:

- Pavement, Container yard, Stack yard Industrial floor
- Size: (200 x 100 x 100) mm
- Size: (200 x 100 x 80) mm
- Size: (200 x 100 x 60) mm



11. HOLLOW BLOCK (WALL, CEILING)

Applications:

- Partition Wall, Ceiling Block
- Boundary Wall
- Size: (390 x 190 x 90) mm
(390 x 190 x 100) mm
(390 x 190 x 140) mm
(390 x 190 x 190) mm

- High strength
- Long Life
- Reasonable prices
- Light weight

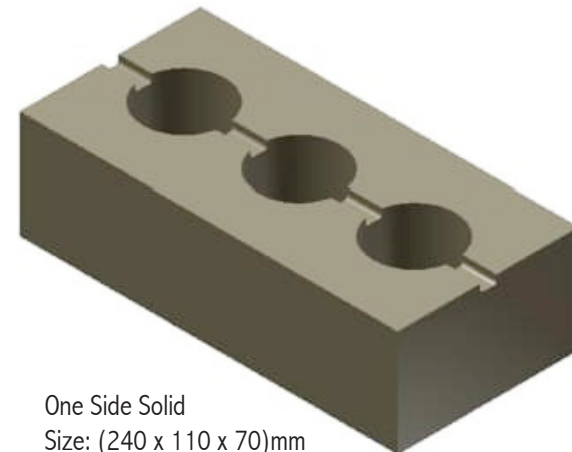


12. SOLID BRICK

- High strength
- Long Life
- Reasonable prices
- Building Construction Block

Applications:

- Partition Wall
- Boundary Wall



One Side Solid
Size: (240 x 110 x 70)mm

13. EROSION CONTROL BLOCK

- High strength
- Long Life
- Reasonable prices
- Provides aesthetical beauty with more greenish look

Applications:

- Beautification like Lake side / Garden (Design)
- Size: (444 x 315 x 100) mm
- Size: (444 x 315 x 80) mm



Size: (444 x 315 x 80) mm

14. SOFT BLOCK

- Long Life
- Reasonable prices
- Provides aesthetical beauty with more greenish look

Applications:

- Beautification like Lake side / Garden (Design)



Size: (150 x 150 x 100) mm



Pea Gravels
HCIL Collection from Sylhet.



Sylhet Sand
HCIL Collection from Sylhet.





HCIL factory ghat.



HCIL factory view.



HCIL is capable to produce any sort of concrete block by its Pneumatic Controlled Machineries.



Finished Uni-Pavers by HCL.





River bank protection using HCIL River Blocks.



HCIL Hollow block stacks.



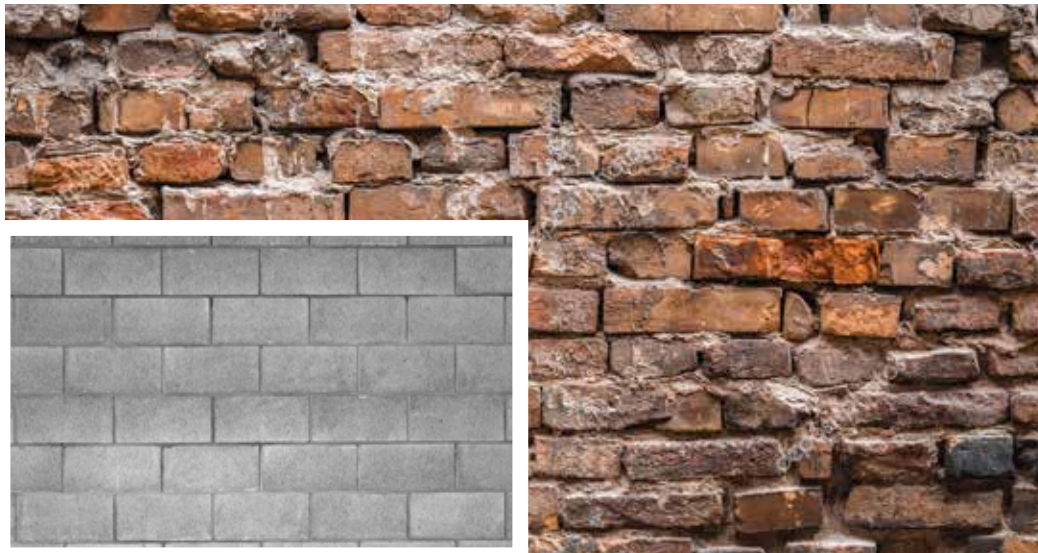
Side view of boundary wall constructed using HCIL Hollow block.



How Buildings may look like built using HCIL Hollow Block.



HCIL Solid Brick view after about 2 years.



Condition of Clay Bricks and Solid Bricks after 10/12 years. HCIL Solid bricks can survive 10 times more than Clay bricks.



Comparison view of Clay Bricks and HCIL Solid Bricks after a few years. The traditional clay brick damages within 15-20 years where HCIL Solid bricks can survive upto 100 years.



View of how finished construction looks like constructed using HCIL Hollow Blocks.



A nice Architectural design constructed using HCIL Hollow Block.

SUPERSONIC INTELLIGENT BLOCK MACHINE



PLANETARY CONCRETE MIXER



FINISHED WORK



HCL Products in Mirpur Area.





COMPARISON BETWEEN HATIM BLOCKS & CLAY BRICKS

PARAMETER	HATIM BLOCK	CLAY BRICK
Structural Cost	Steel saving upto 20%	No such saving
Cement Mortar for Plaster & Masonry	Requires less due to flat even surfaces & less number of joints	Requires more due to irregular surface & more number of joints
Breakage & Utilization	Negligible breakage almost 100% utilization is possible	Average 10 to 12% breakage, so 100% utilization not possible
Labour output	Approximately double of conventional brick	Comparatively slow
Quality	Uniform & Consistent	Normally Varies
Efflorescence	No such chance, which improves the durability of wall along with plaster & paint in a long run	Most chances are there
Storage	Readily available at any time & any season in a short notice so no storage required	Particularly in monsoon, stock at site is compulsory which block large working space
Size	240 mm x 110 mm x 70 mm	237 mm x 112 mm x 68 mm
Compressive Strength	3-5 N/m ² (can be higher as 20 N/mm ² C equirement)	Can be 7.5 N/m ² x21 MPA(N/mm ²)
Fire Resistance (8 inch wall)	Up to 4 hours	Around 2 hours
Cost Benefit	Reduction in dead weight leading to savings in steel, plaster and concrete.	None
Energy Saving	Approximately 30% for heating and cooling	None
Breakage	Very less breakage	About 20-25 %
Heat Insulation	Very good insulation	Poor insulator in comparison to HATIM BLOCKS

TEST REPORT



BANGLADESH UNIVERSITY OF ENGINEERING AND TECHNOLOGY (BUET)
DEPARTMENT OF CIVIL ENGINEERING
 M: 8801 07 866, F: 8801 300-80 Ext. 7226, www.buet.ac.bd/ce

CONCRETE LABORATORY

BRTC No. : **1160-51437 /13-14CE; Dt: 5/9/2019**
 Sent by : **Hatin Concrete Industry Limited.**
 Ref. No. : **HCIL/BUET/2019/18; Dt: 5/5/2019**
 Project : **Not mentioned**
 Sample : **C.C. Solid Brick**
 Nominal Size: **240 mm x 110 mm x 70 mm**
 Test : **Compressive Strength (ASTM C140)**
 Date of Test : **8/9/2019**

Sl. No.	Date of Casting as per the Letter	Specimen Designation/ Frog Mark	Specimen Area (sq. in)	Maximum Load (lb)	Crushing Strength (psi)	Average Crushing Strength (111.8 MPa)	Mode of Failure
1	15/7/2019	HCL-1	42.20	71,863	1,843	1700 psi (111.8 MPa) (120 kg/cm ²)	Combined*
2	88 days test	HCL-2	41.84	67,592	1,613		Combined*
3		HCL-3	42.26	68,631	1,632		Combined*

Note: Samples were received in unsealed condition. * Combined = Mortar and Aggregate failure

Courtesigned by: **Dr. Md. Abdul Rauf**
 Professor
 Department of Civil Engineering
 BUET, Dhaka-1000, Bangladesh

Test Performed by: **Mr. Ruhul Amin**
 Assistant Professor
 Department of Civil Engineering
 BUET, Dhaka-1000, Bangladesh

Important Note: Samples as supplied to us have been tested in our laboratory. BRTC does not have any responsibility as to the representative character of the samples required to be tested. It is recommended that samples are sent in a secure and sealed cover/container under signature of the competent authority. In order to avoid fraudulent fabrication of test results, it is recommended that all test reports are collected by duly authorized person, and not by the Contractor/Supplier.

BANGLADESH UNIVERSITY OF ENGINEERING AND TECHNOLOGY (BUET)
DEPARTMENT OF CIVIL ENGINEERING
 M: 8801 07 866, F: 8801 300-80 Ext. 7226, www.buet.ac.bd/ce

CONCRETE LABORATORY

BRTC No. : **1160-84274 /14-15CE; Dt: 20/10/2019**
 Sent by : **Hatin Concrete Industry Limited**
 Ref. No. : **HCIL/BUET/2019/178; Dt: 18/9/2019**
 Project : **Laboratory Test of Uni Power Block**
 Sample : **S-shape Uni-Pavers (222 mm x 110 mm x 100 mm)**
 Test : **Compressive Strength (BS 6717-1)**
 Date of Test : **25/9/2019**

Sl. No.	Specimen Designation/ Frog Mark	Specimen Height (mm)	Specimen Area (sq. mm)	Maximum Load (kN)	Crushing Strength (N/mm ²)	Corrected Crushing Strength* (N/mm ²)	Average Compressive Strength
1	-	89.30	2526	1202.68	47.58	50.00	48 N/mm ² 692 psi (48 kg/cm ²)
2	-	70.20	2526	1163.18	45.96	49.00	
3	-	70.20	2526	1064.38	42.30	45.00	

Note: Samples were received in unsealed condition. * Thickness and Chamfer Correction Factor is 1.06

Courtesigned by: **Dr. Abu Siddique**
 Professor
 Department of Civil Engineering
 BUET, Dhaka-1000, Bangladesh

Test Performed by: **Md. Waleed Islam**
 Lecturer
 Department of Civil Engineering
 BUET, Dhaka-1000, Bangladesh

Important Note: Samples as supplied to us have been tested in our laboratory. BRTC does not have any responsibility as to the representative character of the samples required to be tested. It is recommended that samples are sent in a secure and sealed cover/container under signature of the competent authority. In order to avoid fraudulent fabrication of test results, it is recommended that all test reports are collected by duly authorized person, and not by the Contractor/Supplier.

BANGLADESH UNIVERSITY OF ENGINEERING AND TECHNOLOGY (BUET)
DEPARTMENT OF CIVIL ENGINEERING
 M: 8801 07 866, F: 8801 300-80 Ext. 7226, www.buet.ac.bd/ce

CONCRETE LABORATORY

BRTC No. : **90402/12-13CE; Dt: 19/10/2019**
 Client : **Hatin Concrete Industry Limited**
 Ref. No. : **HCIL/BUET/2019/180; Dt: 19/10/2019**
 Project : **Reth-K1 Dhaka**
 Sample : **Concrete Cylindrical Core (No. proportioned sumit) - Aggregate Type: (Stone 14mm)**
 Date of Casting : **NA** Date of Sample collection : **NA**
 Test : **Compressive Strength of Concrete Cylindrical Core (ASTM C40)**
 Date of Test : **01/9/2019**

Sl. No.	Location	Sample Identification Mark	Length of Sample (in)	Diameter of Sample (in)	Average Core Section Area (sq. in)	Ultimate Load (lb)	Crushing strength (psi)	Type of Failure
1	Reth-Dhaka #1	HCL-1	5.4	2.72	5.81	32,380	3512 psi (24.2 MPa)	Combined*
2	Reth-Dhaka #1	HCL-2	5.4	2.72	5.81	21,407	2682 psi (23.4 MPa)	Combined*
3	Reth-Dhaka #1	HCL-3	5.4	2.72	5.91	18,208	2110 psi (21.8 MPa)	Combined*
-	-	-	-	-	-	-	-	-
-	-	-	-	-	-	-	-	-
-	-	-	-	-	-	-	-	-

* Combined = Mortar and Aggregate failure

Courtesigned by: **Dr. Md. Abdul Rauf**
 Professor
 Department of Civil Engineering
 BUET, Dhaka-1000, Bangladesh

Test Performed by: **Md. Waleed Islam**
 Lecturer
 Department of Civil Engineering
 BUET, Dhaka-1000, Bangladesh

Warning: Samples as supplied to us have been tested in our laboratory. BRTC does not have any responsibility as to the representative character of the samples required to be tested. It is recommended that samples are sent in a secure and sealed cover/container under signature of the competent authority. In order to avoid fraudulent fabrication of test results, it is recommended that all test reports are collected by duly authorized person, and not by the Contractor/Supplier.